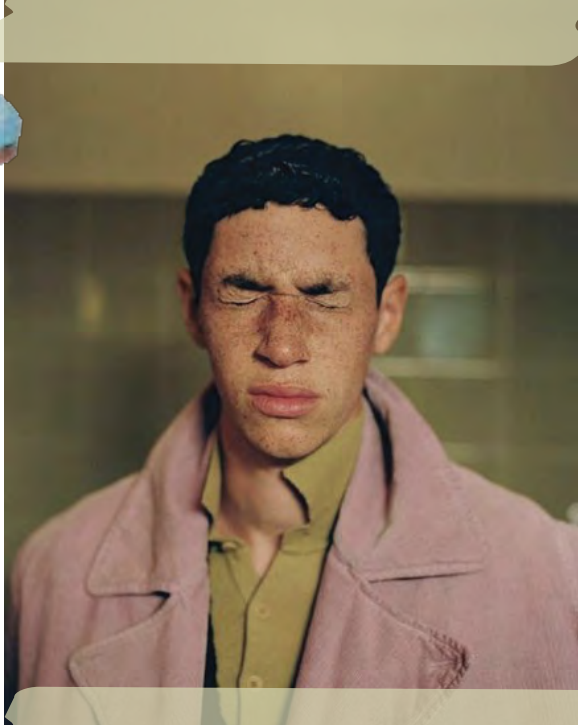


THIS PAGE + OPPOSITE PAGE BY JULIA NONI FOR NIKE



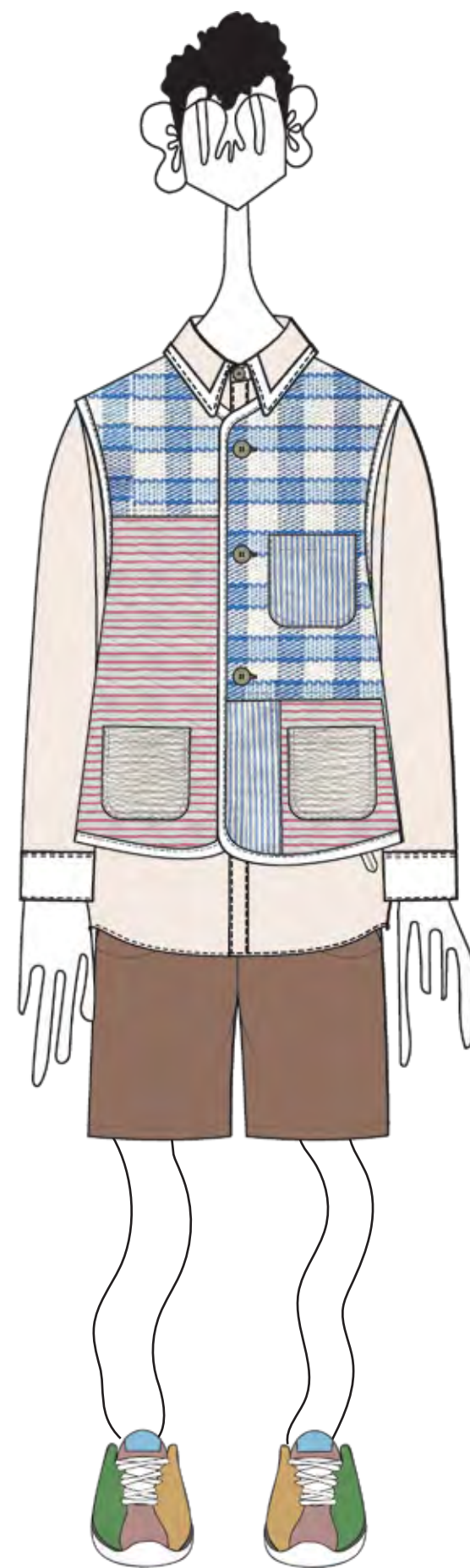
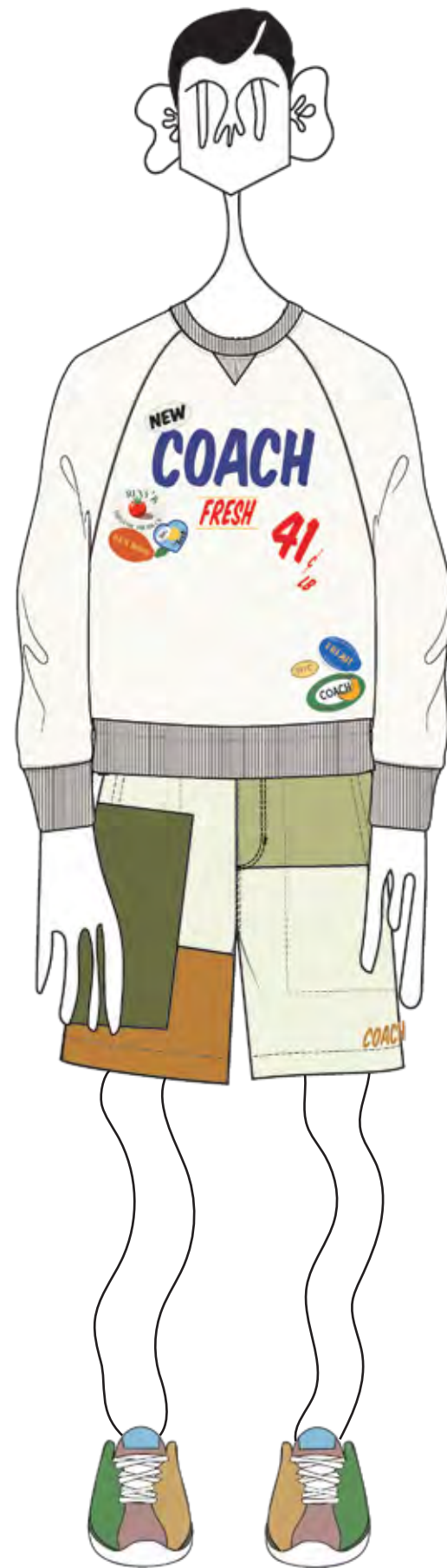
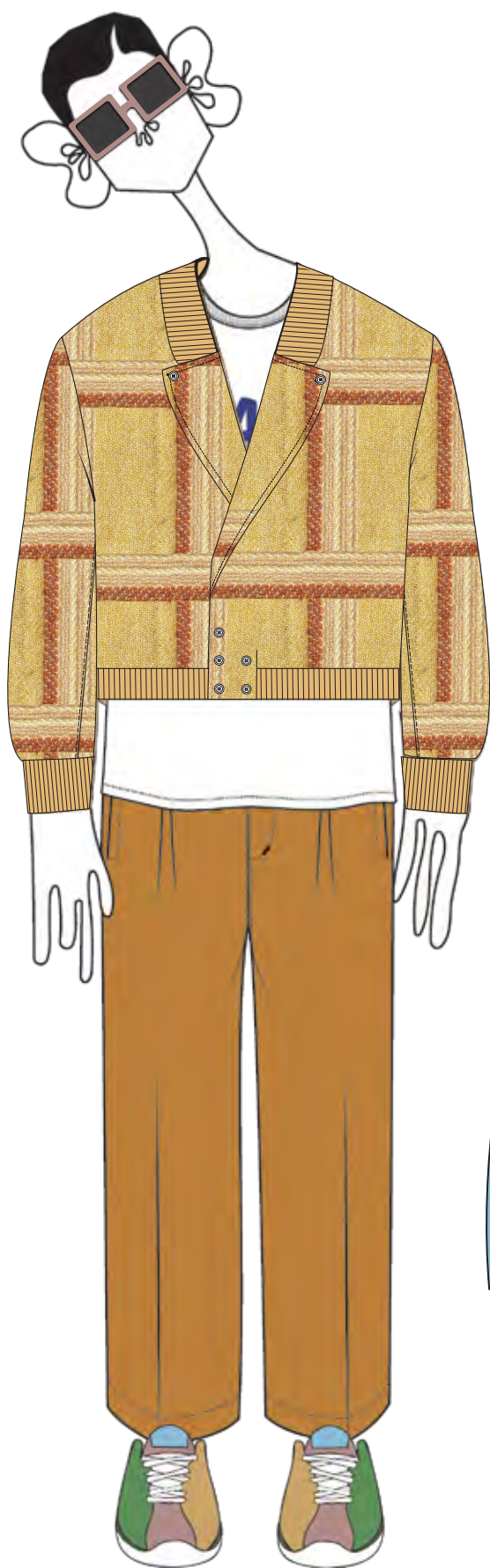
41 C/LB



COACH SPRING 23

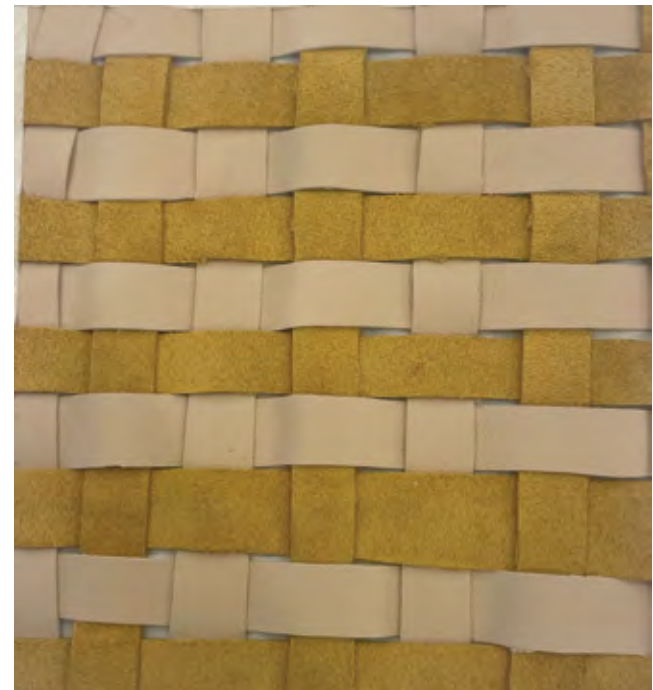
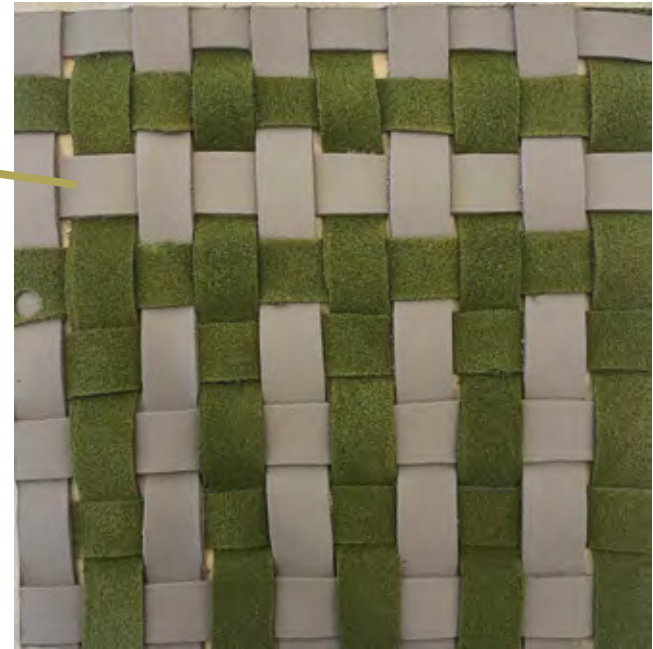


sun faded colors. natural lightweight textures. vintage leather finishes





woven scrap leather shorts



color and weave mockup

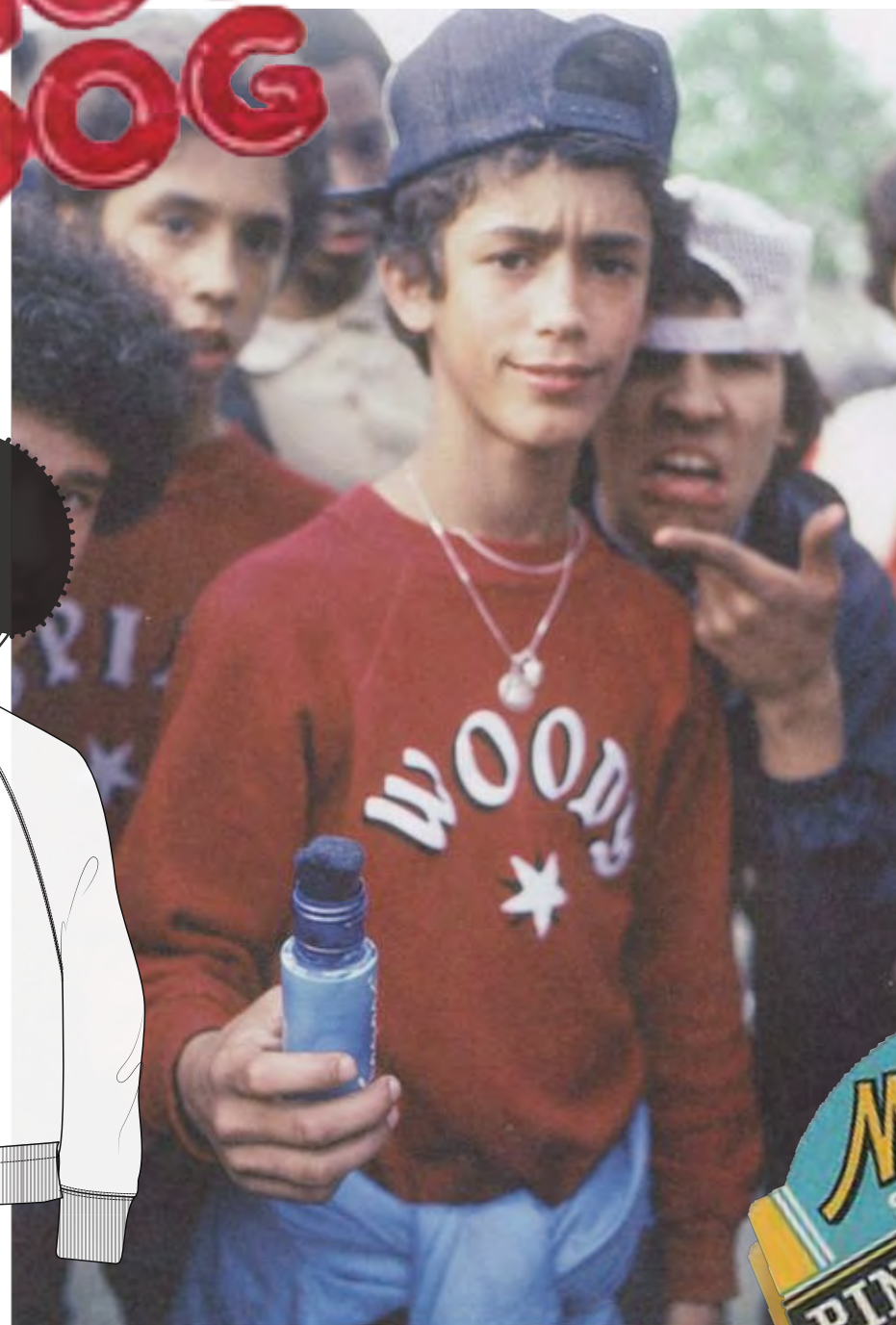


graphics development
- supermarket advertisement
- little nancy comic strip



sweatshirt sketch ideas

HOT
DOG





pantone:
bright red c



pantone:
classic blue



pantone:
lemon meringue

PATCH





COACH


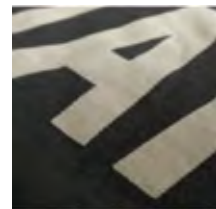
FRESH

41^c
LB



 PUFF PRINT 

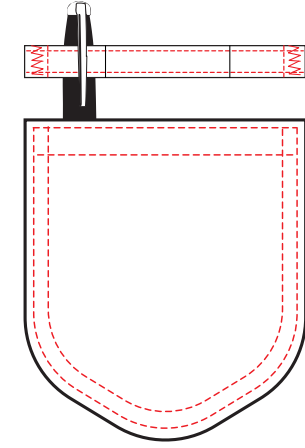
TECHNIQUE REFERENCE

 SOFT PLASTISOL PRINT 

TECHNIQUE REFERENCE



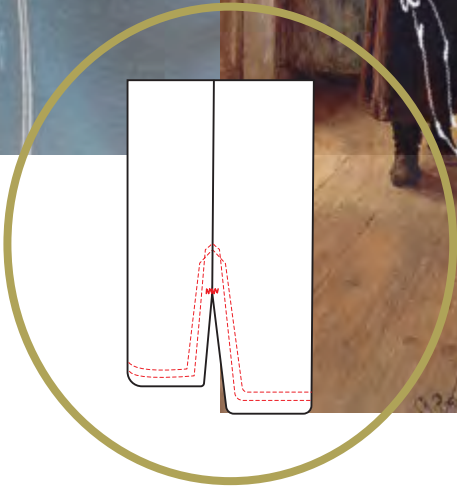
wearer's left front shirt pocket

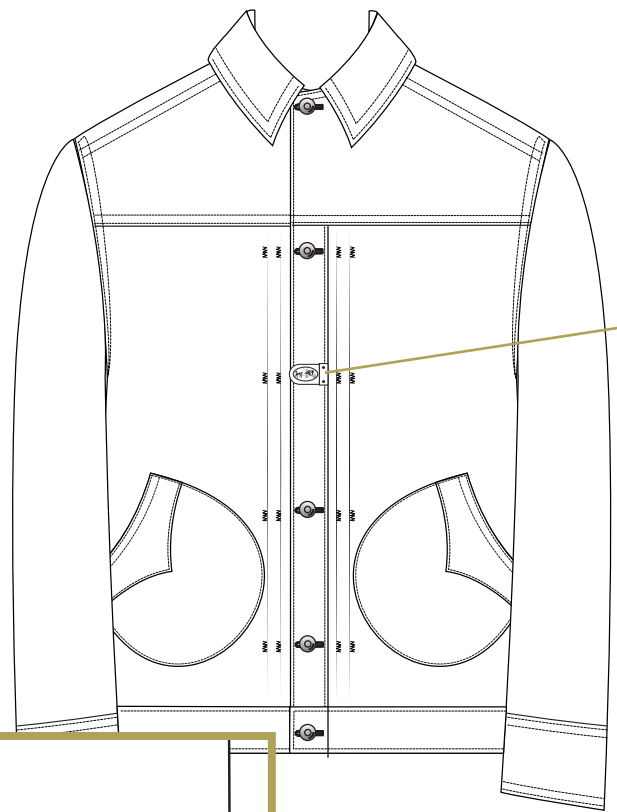


LINEN

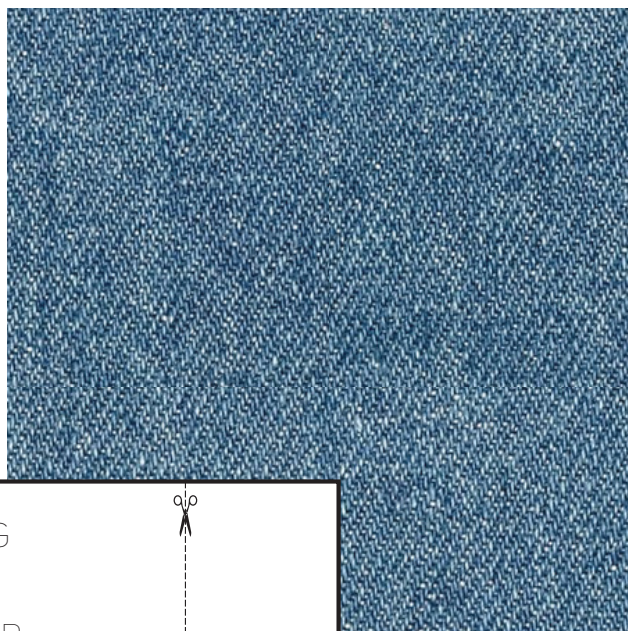
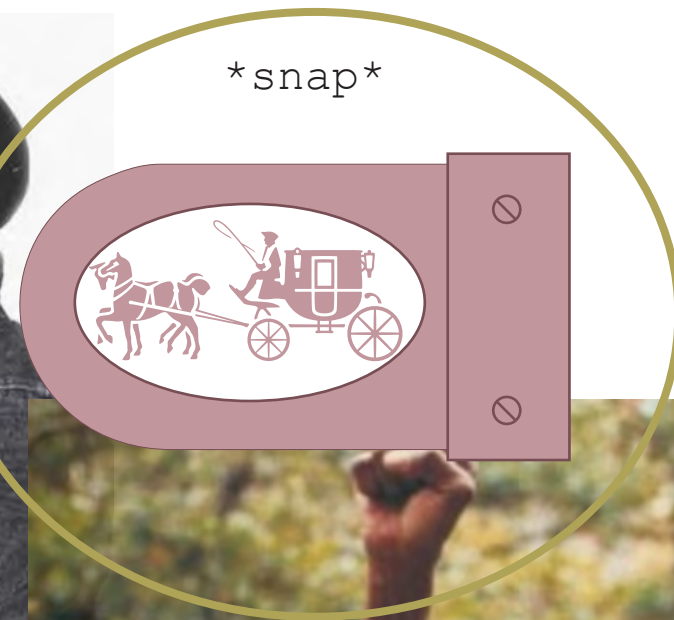
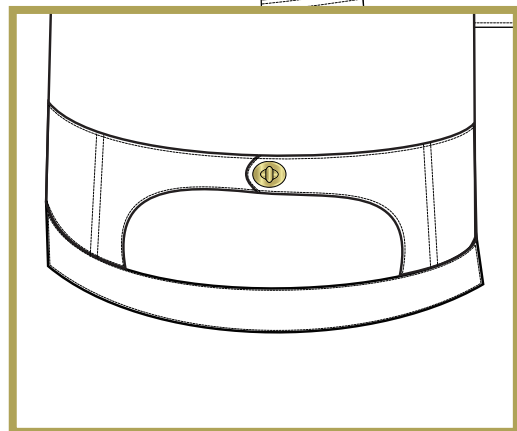
shirt cuff details
contrast stitching on whole shirt

side hem view



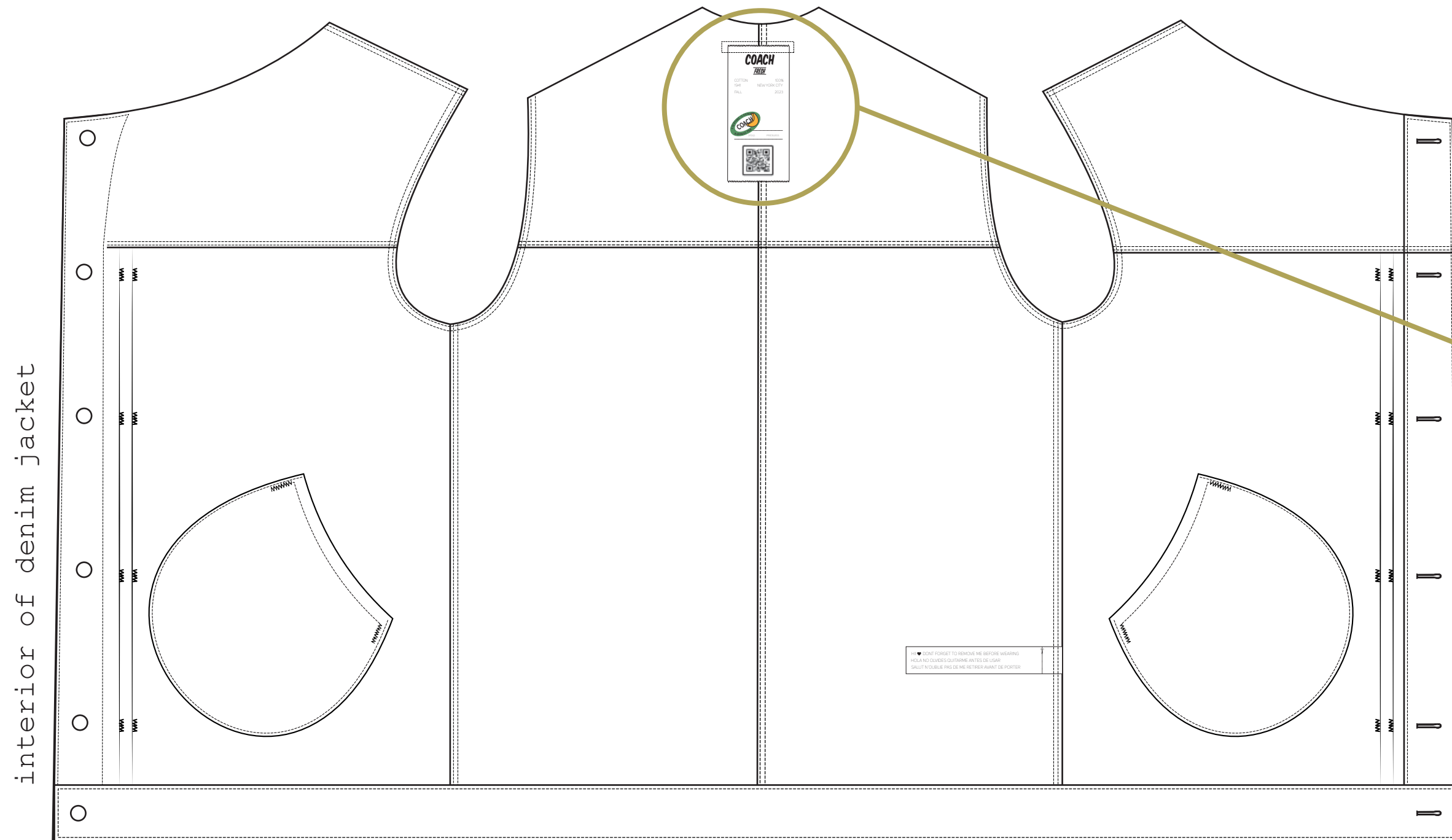


denim jacket sketch



HI! ♥ DONT FORGET TO REMOVE ME BEFORE WEARING
HOLA NO OLVIDES QUITARME ANTES DE USAR
SALUT N'OUBLIE PAS DE ME RETIRER AVANT DE PORTER

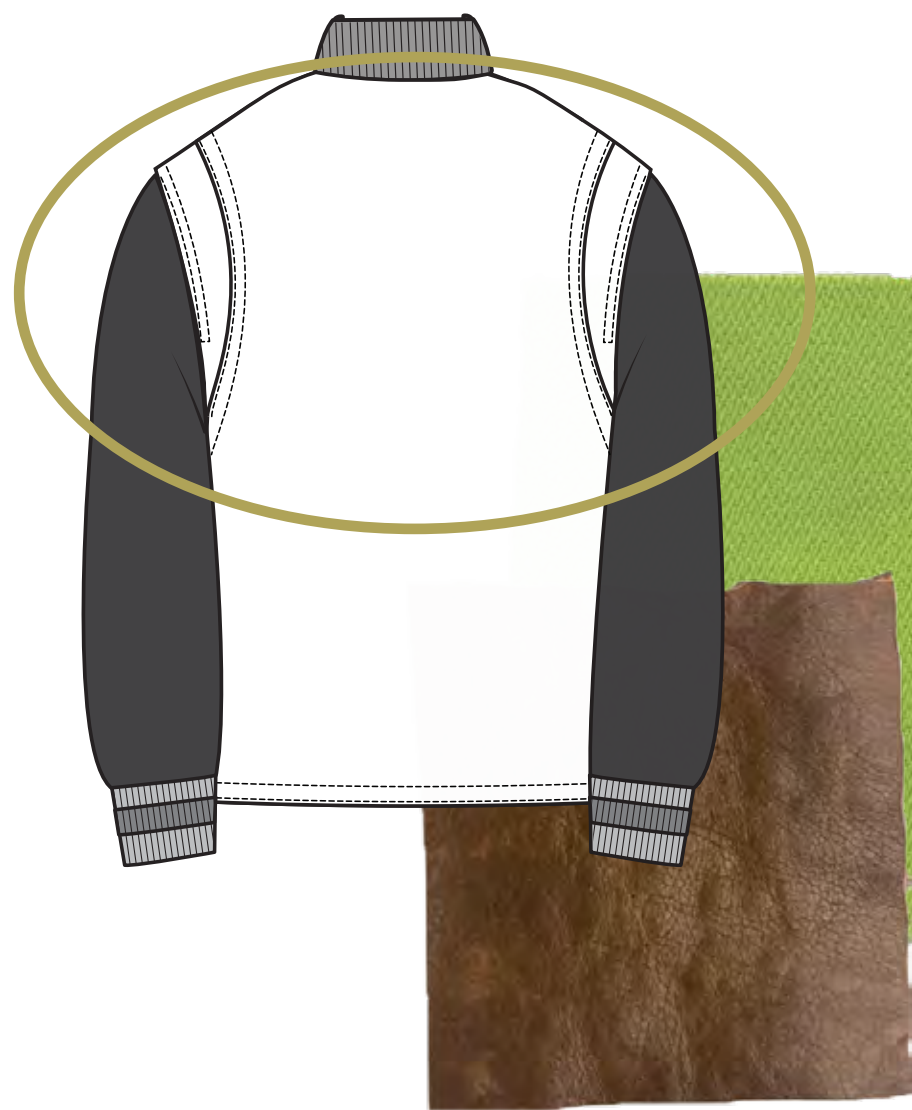




interior of denim jacket

see following pages

wool and leather jacket
w/action back



fabirc and color option #1

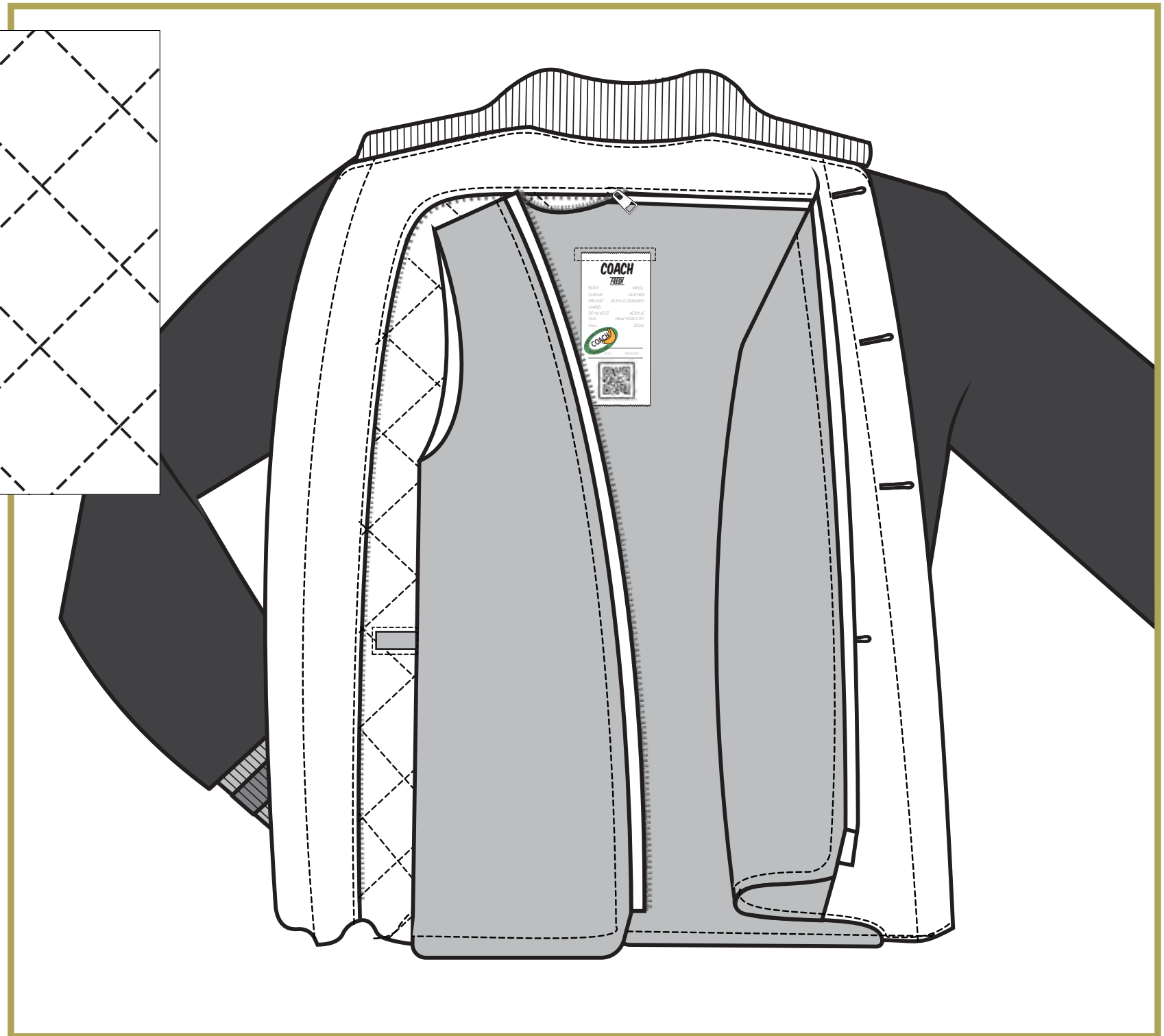
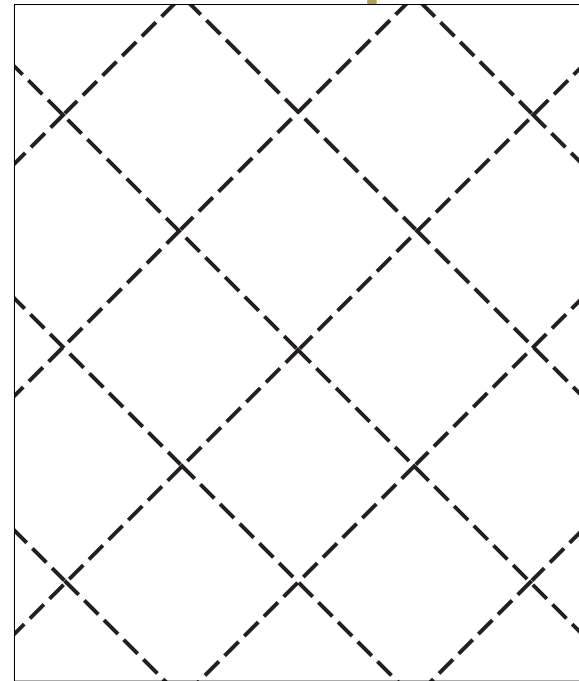


contrast TS

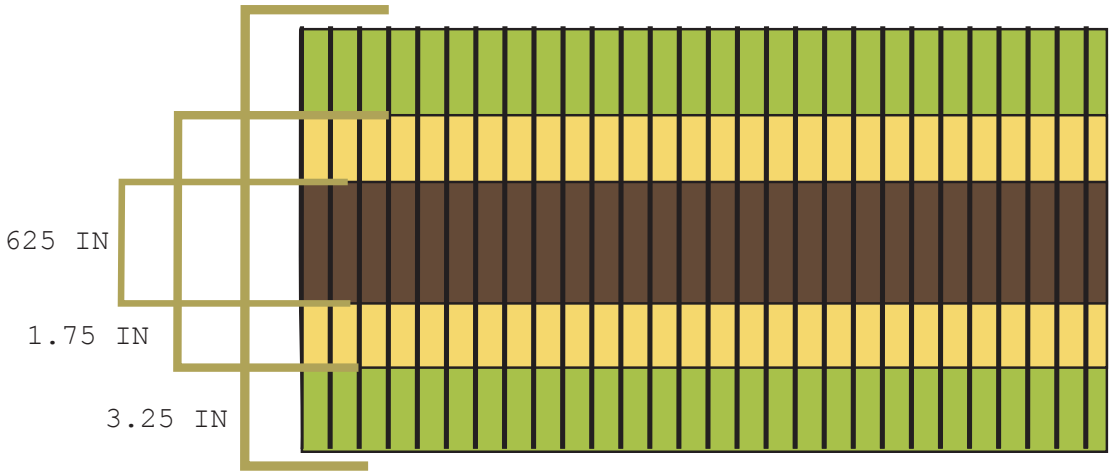


fabirc and color option #2

2.25" x 2.25" diamond quilting pattern



zip out vest jacket lining



research on
vintage fruit stickers

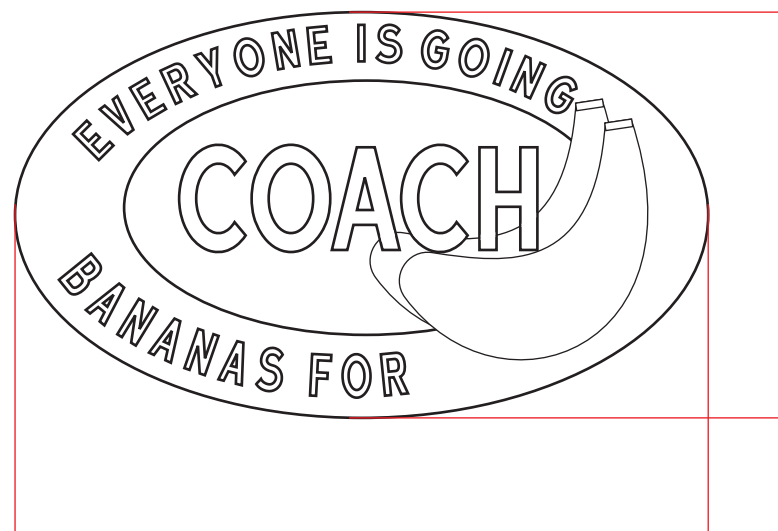


- referenced
- supermarket ads
 - vintage produce labels
 - 50,60s advert colors

coach fruit sticker development



ARTWORK NOT TO SCALE



4.36 CM

7.59 CM



PANTONE 18-6320 TPG
FAIRWAY

PANTONE 14-0849 TPG
BEACH BALL


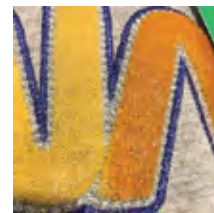
PANTONE 19-1102 TPG
LICORICE

PANTONE 11-0601 TPG
BRIGHT WHITE

PANTONE 17-6333 TPG
MINT GREEN



TECHNIQUE REFERENCE

 BRUSH STITCH - 3MM HIGH 

TECHNIQUE REFERENCE

 TATAMI STITCH 

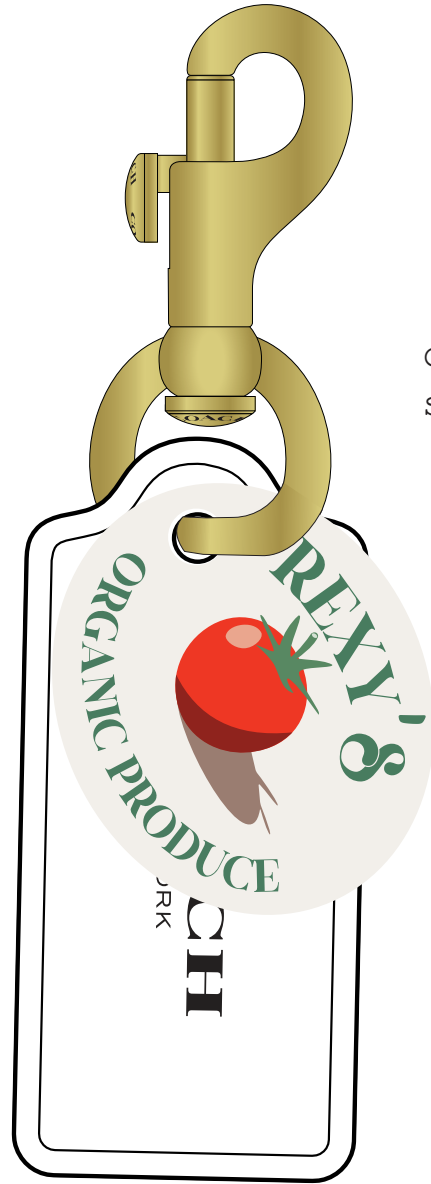
TECHNIQUE REFERENCE

 3D SATIN STITCH 

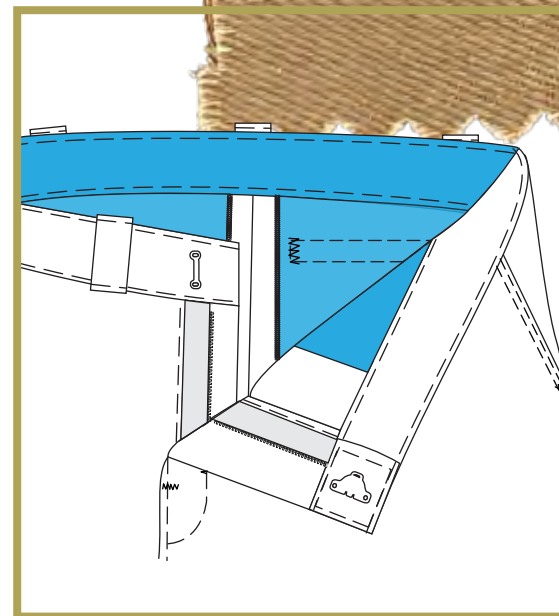
TECHNIQUE REFERENCE

 FLAT SATIN STITCH 

fabric:98% cotton 2% lycra

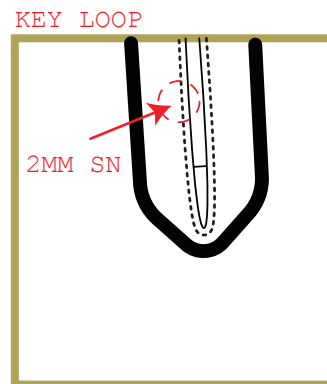
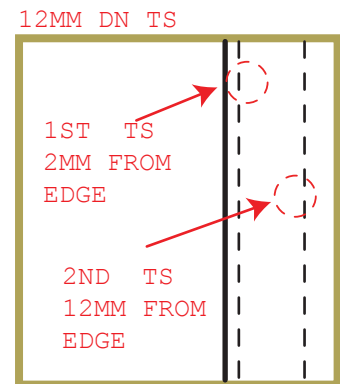


coach archive story patch

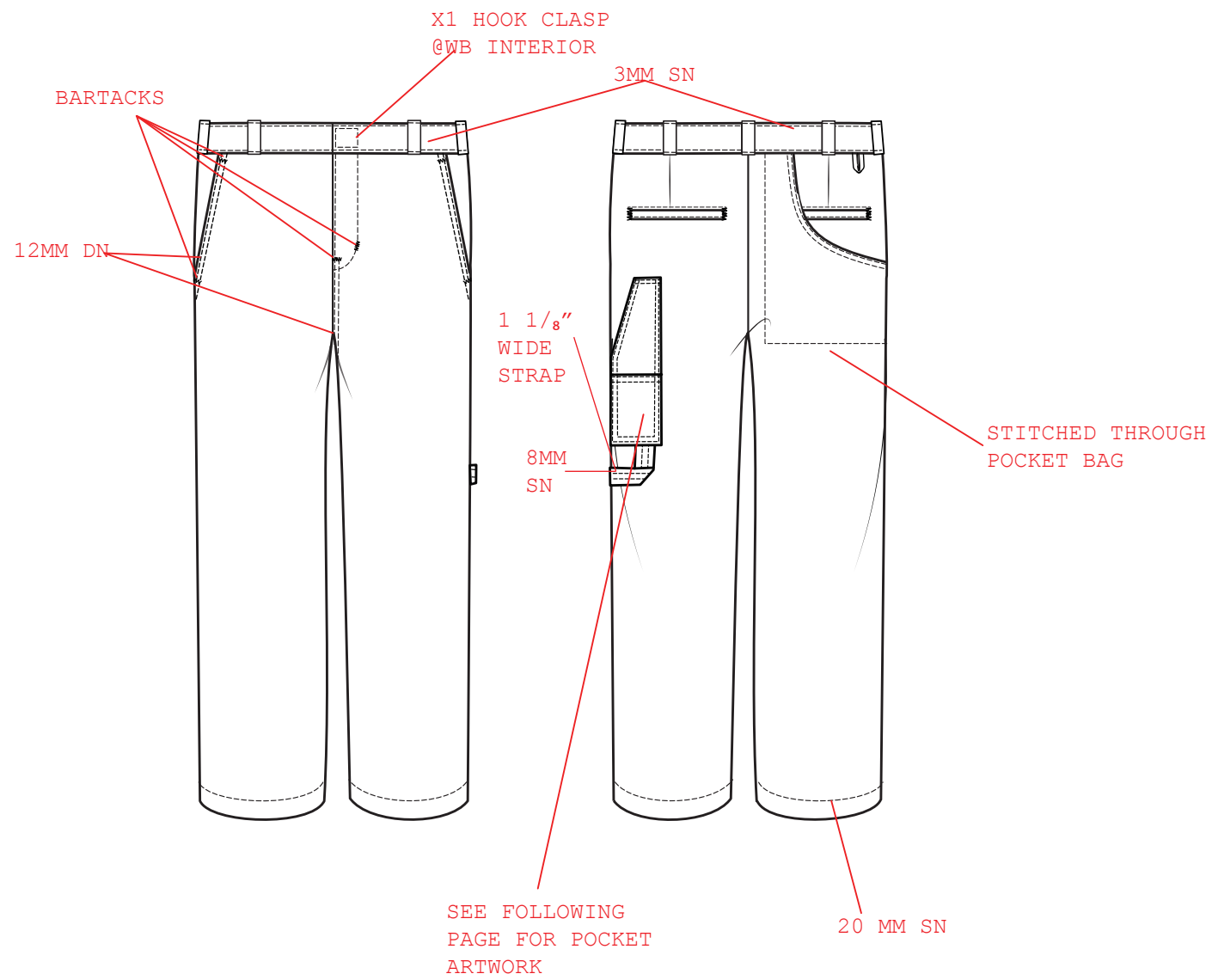
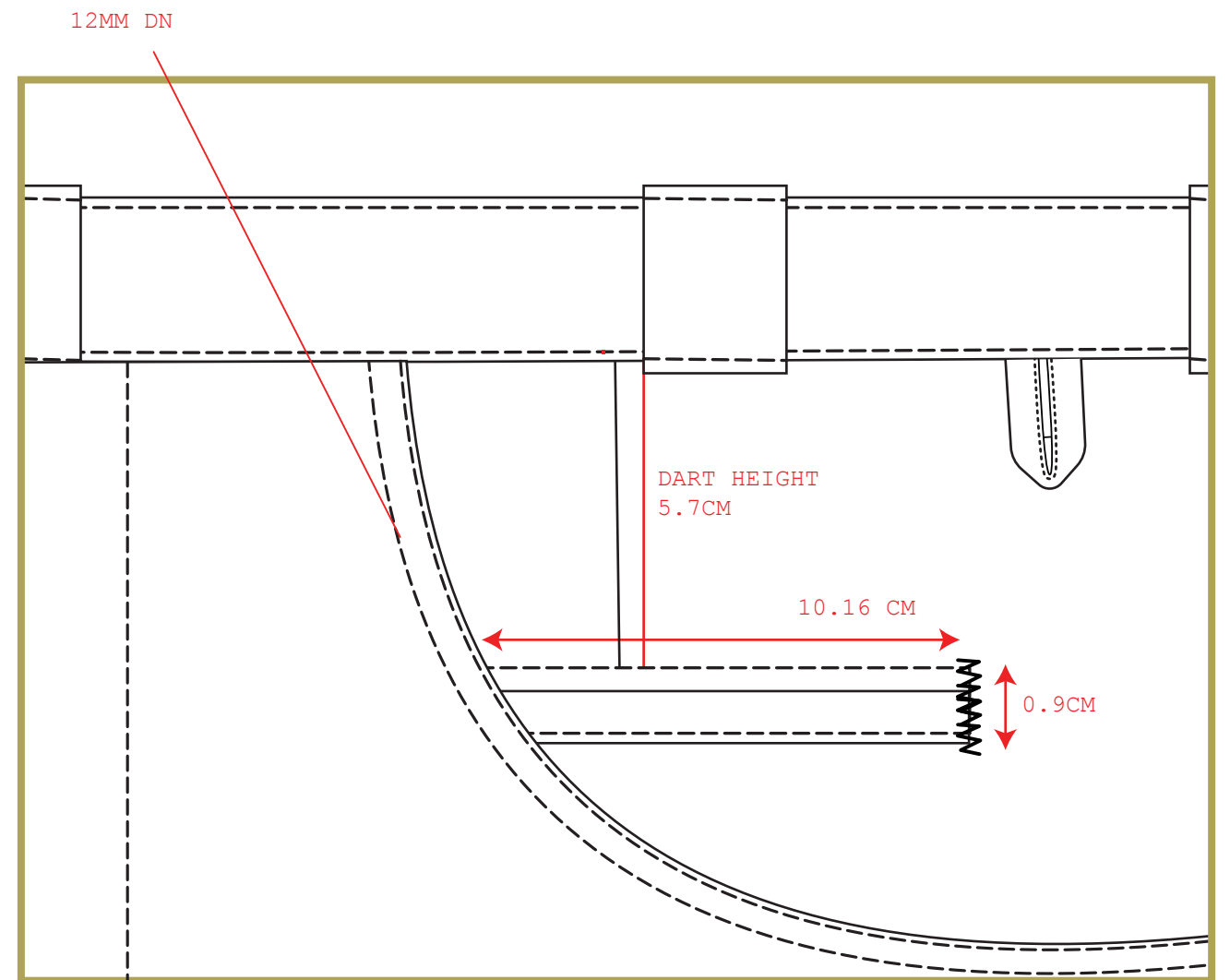


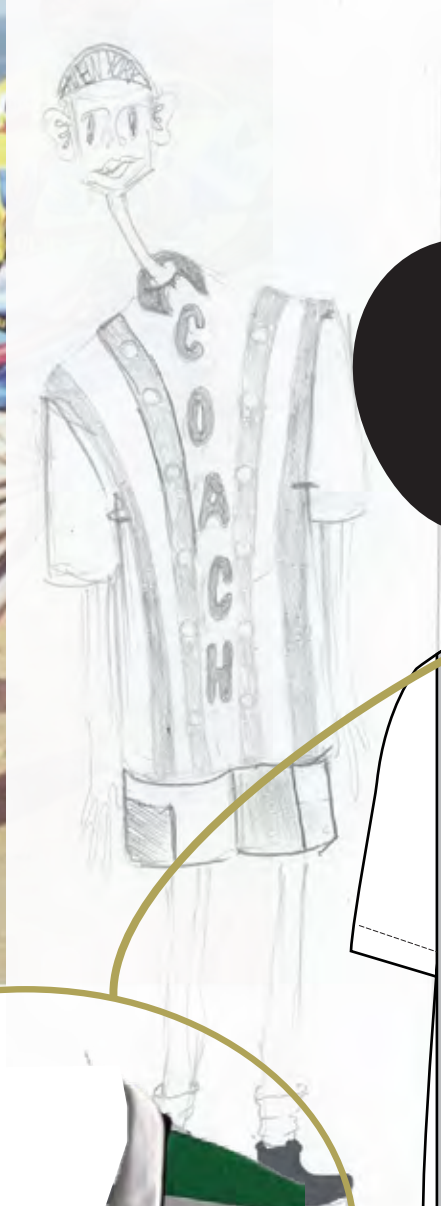
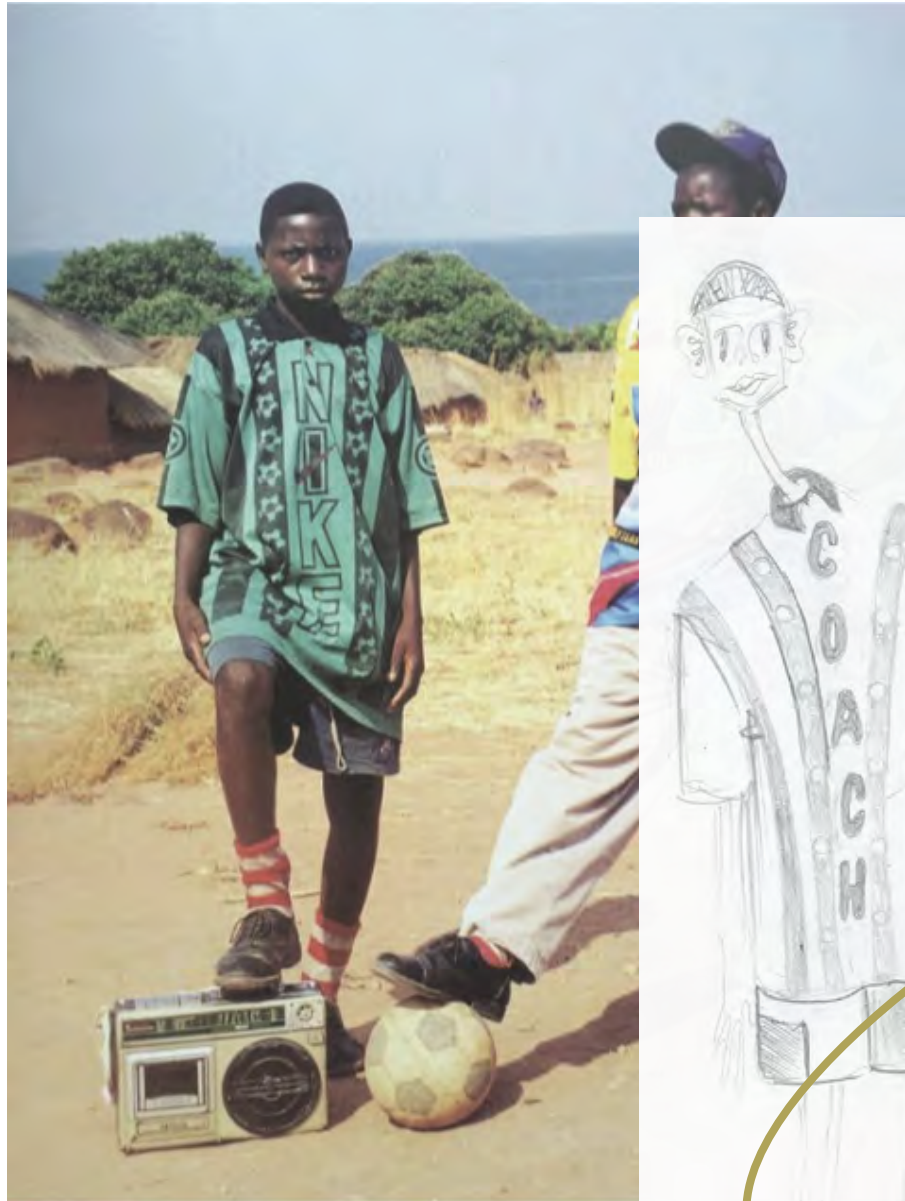
interior construction details
all interior seams merrowed





WEARERS BACK RIGHT POCKET DETAILS





rugby jersey
100% knitted cotton

COLLARED JERSEY



reference for football shirt
neck construction

technique

water based print



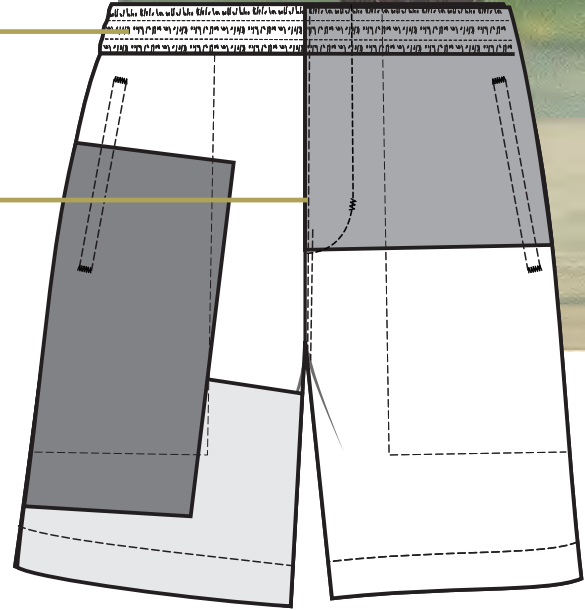
reference





elasticated
waistband

concealed front
zip fastening



silk linen

100% cotton

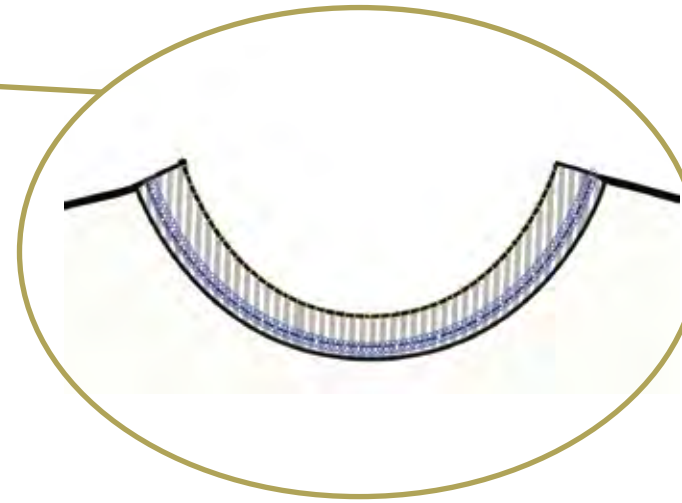
100% cotton

bamboo linen

PATCHWORK RUGBY SHORTS

*each garment is unique
in patchwork placement

"new" sticker patch



tee collar detail:
rib collar flatlock stitched to tee
top of rib gets decorative contrast blanket stictch

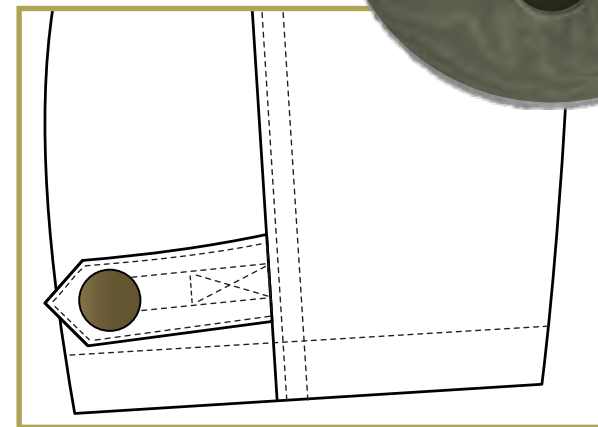
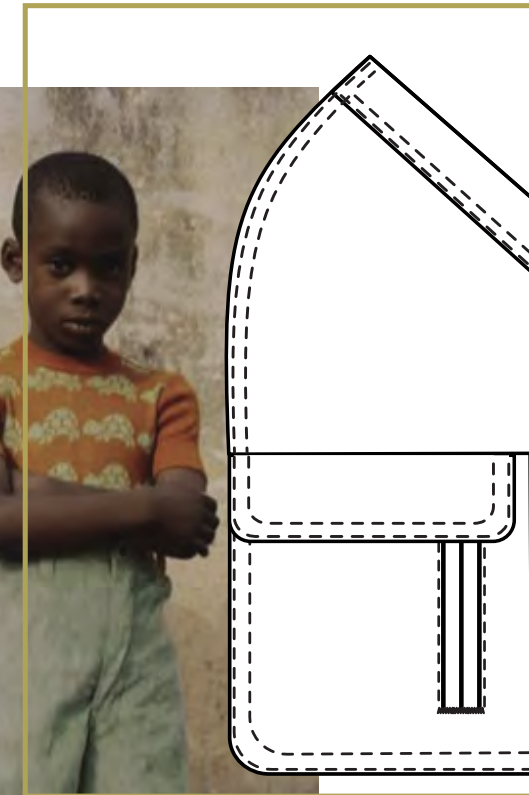


COACH FRESH TEE ASSORTMENT

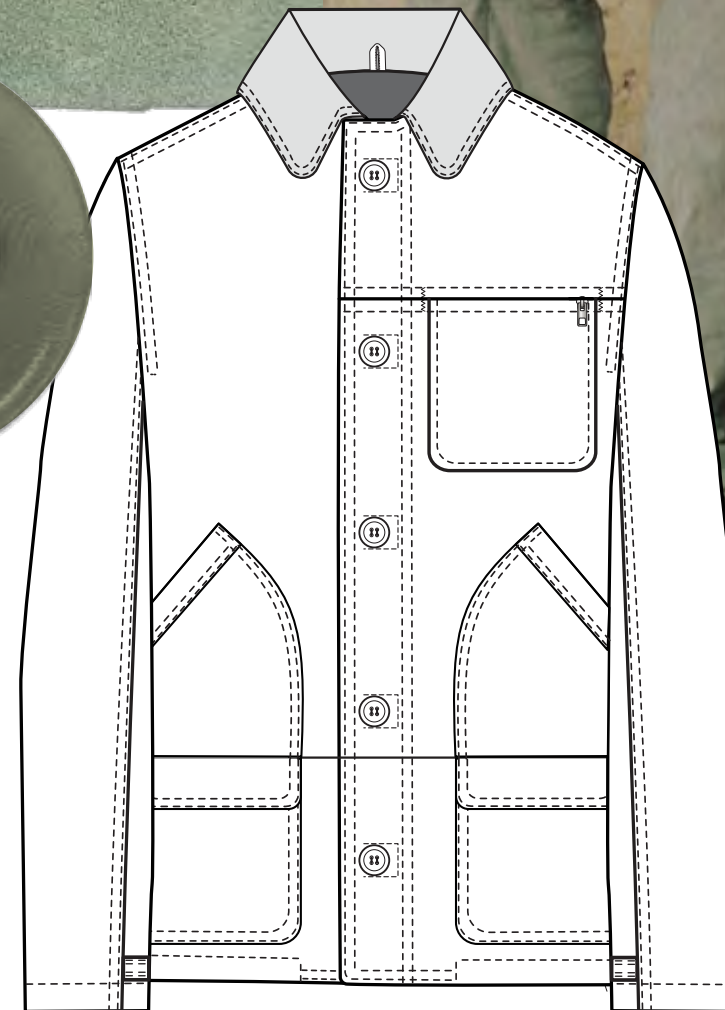
L-S3519-39
kentucky .9- 1.0mm

L-S3519-39
kentucky .9- 1.0mm

pocket details



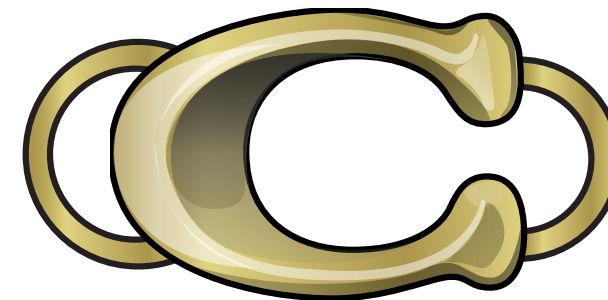
cuff details



LEATHER CHORE JACKET







small signature c's linked together
in a diamond pattern with larger C charms
weighing down the ends



SIGNATURE C CHAIN VEST

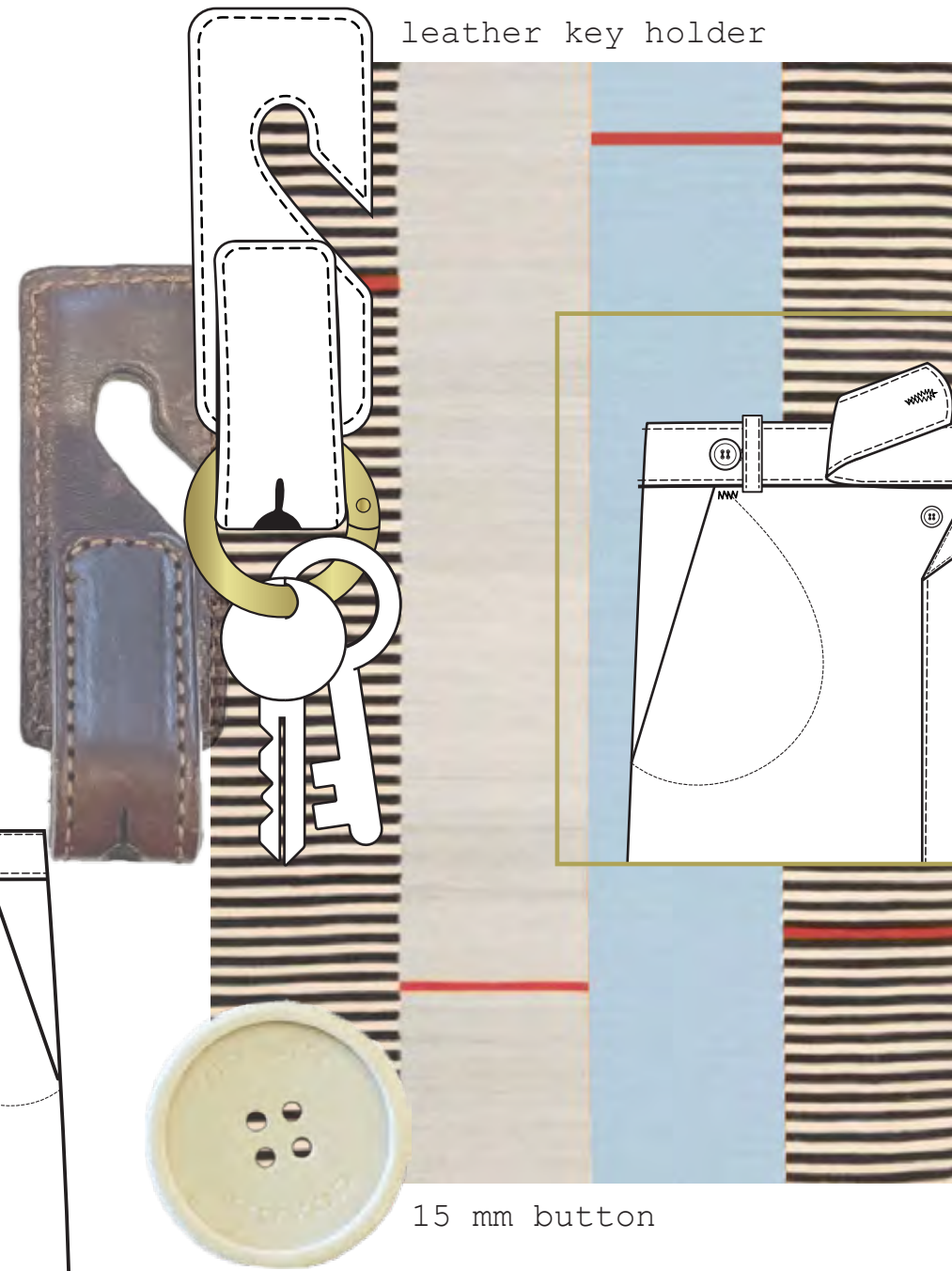
PATCHWORK VEST

vest fabrics

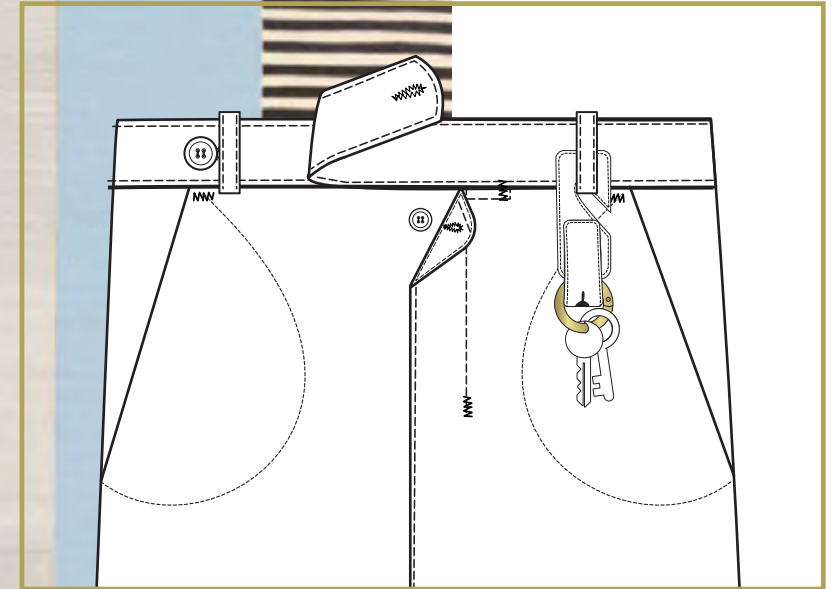
-  100% cotton
-  100% cotton
-  100% cotton
-  100% swiss cotton
-  leather binding



leather key holder

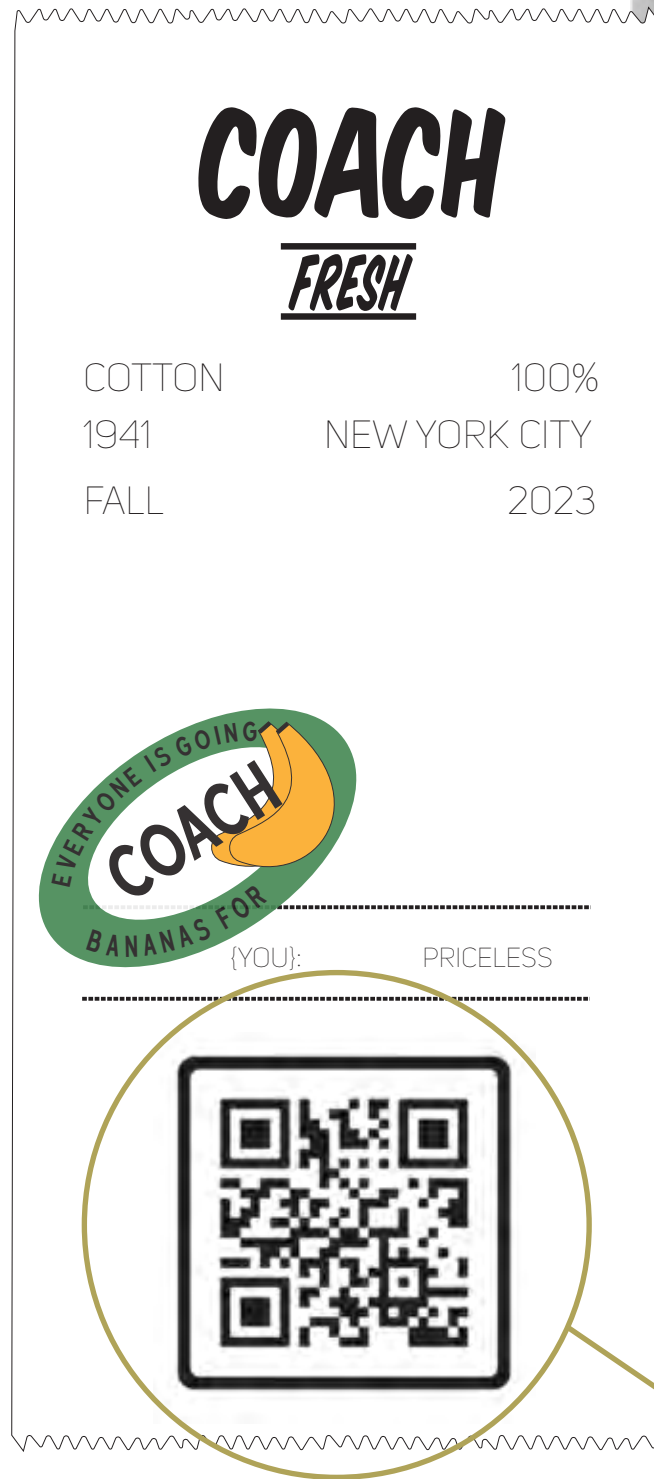


15 mm button

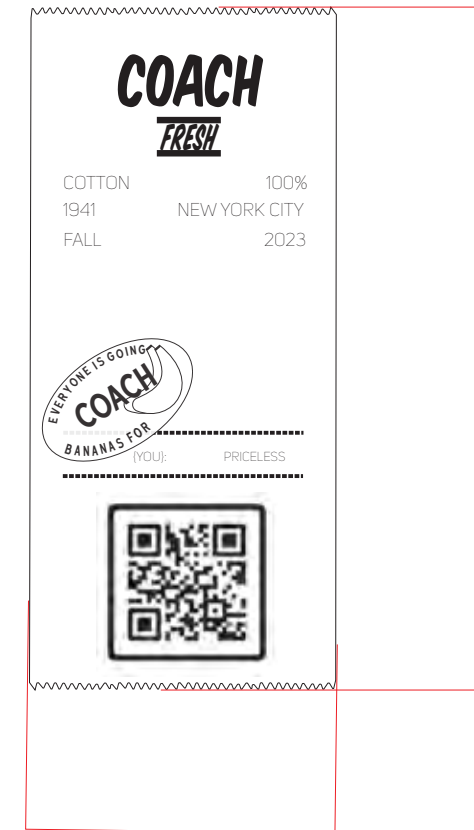


shorts fly and waistband construction

tags digitally
printed on
scrap fabrics



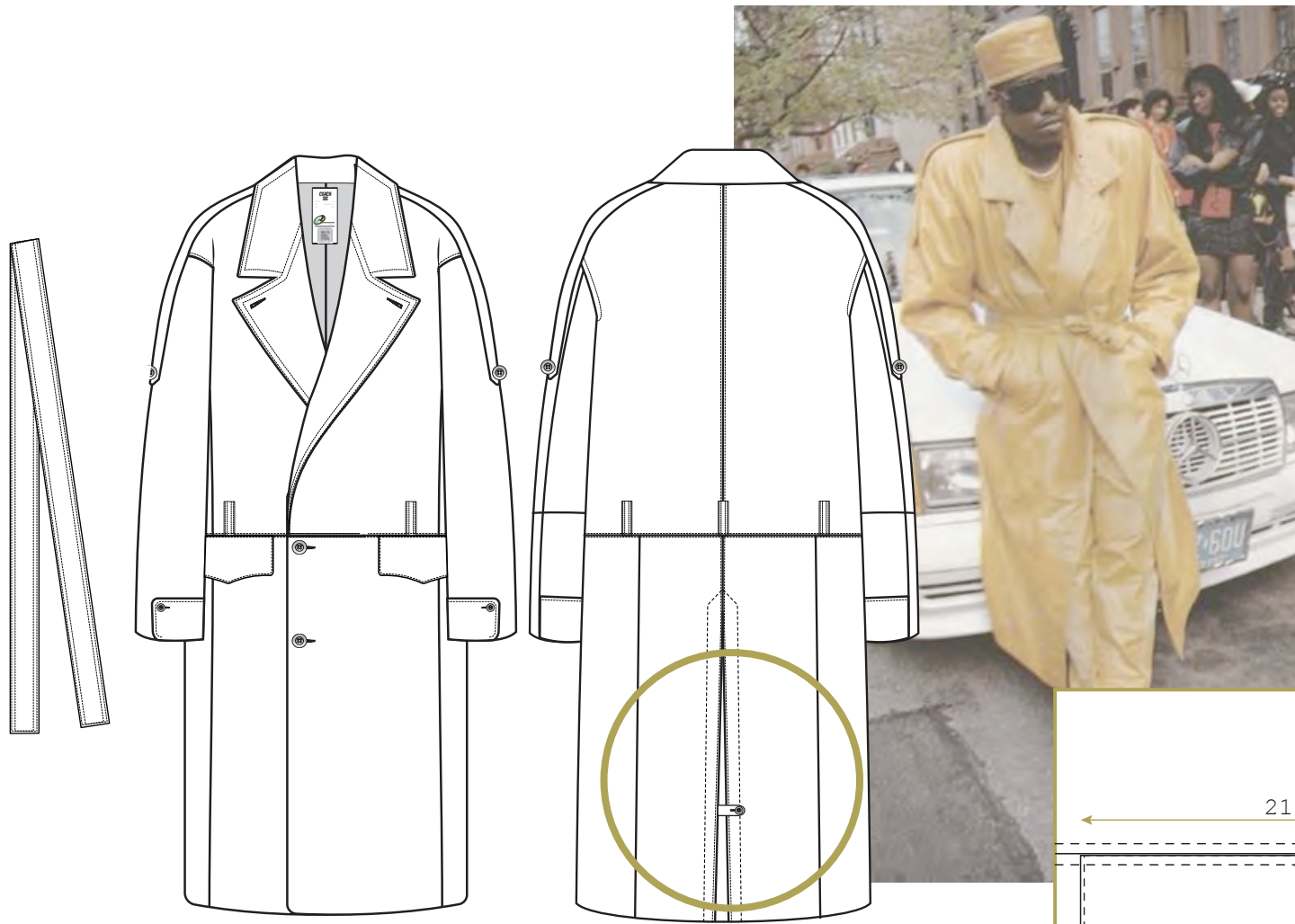
tag scale



3.5 in

2.25

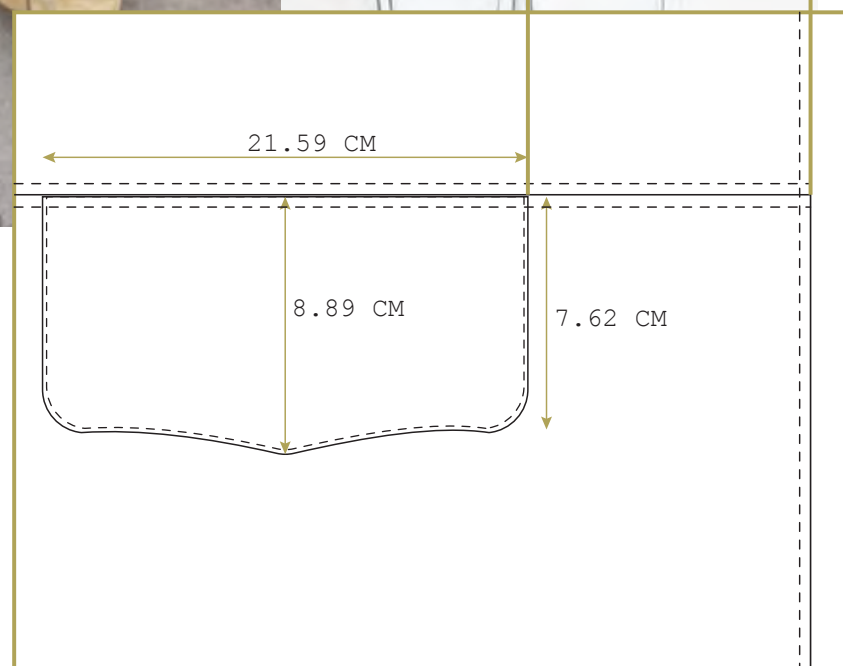
each tag has a qr code
w/ care instructions



sleeve details:
strap seamed in @ collar
cuff seamed in @ SS



POCKET 15.24 CM FROM CF



POCKET ARTWORK IS NOT TO SCALE

